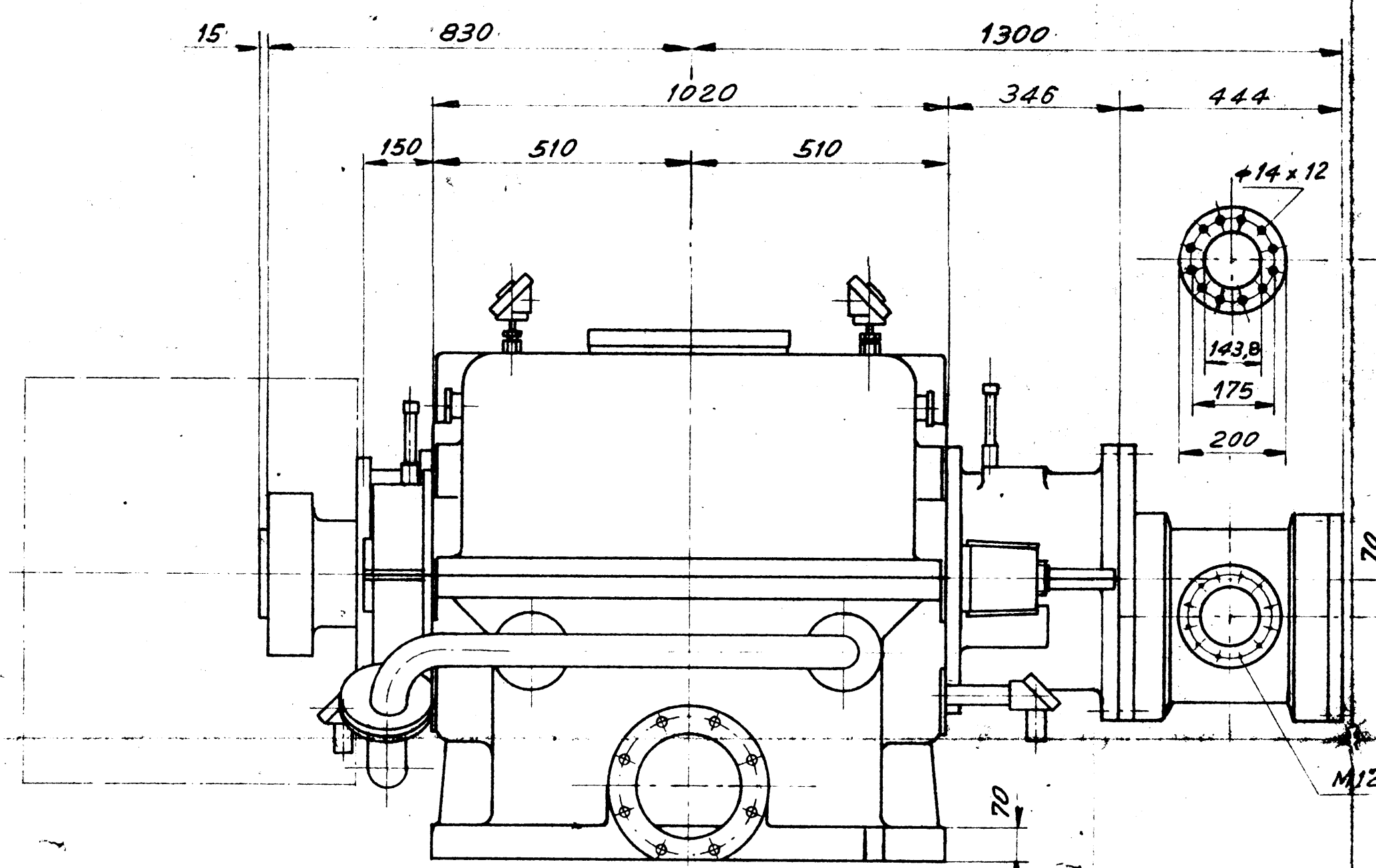
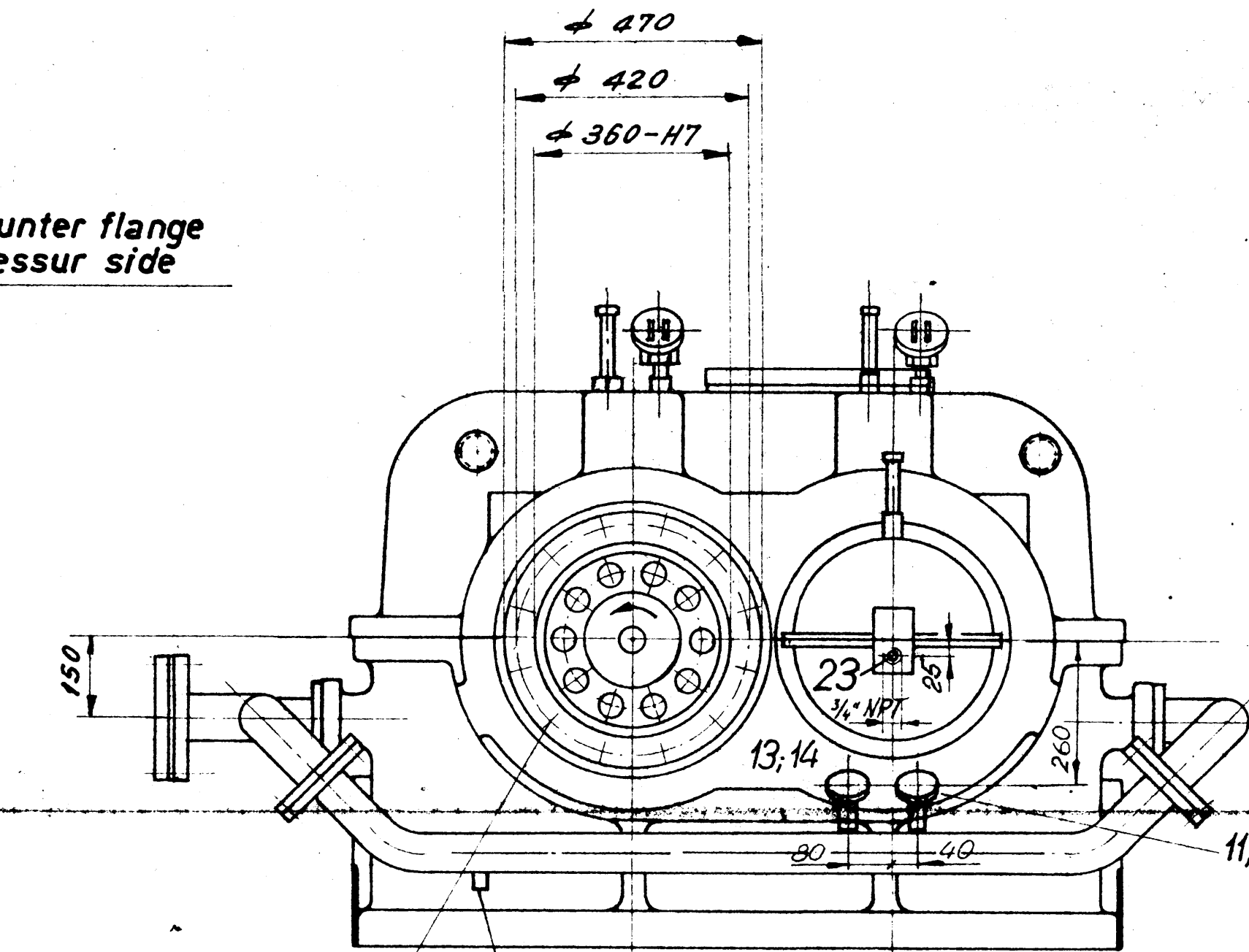


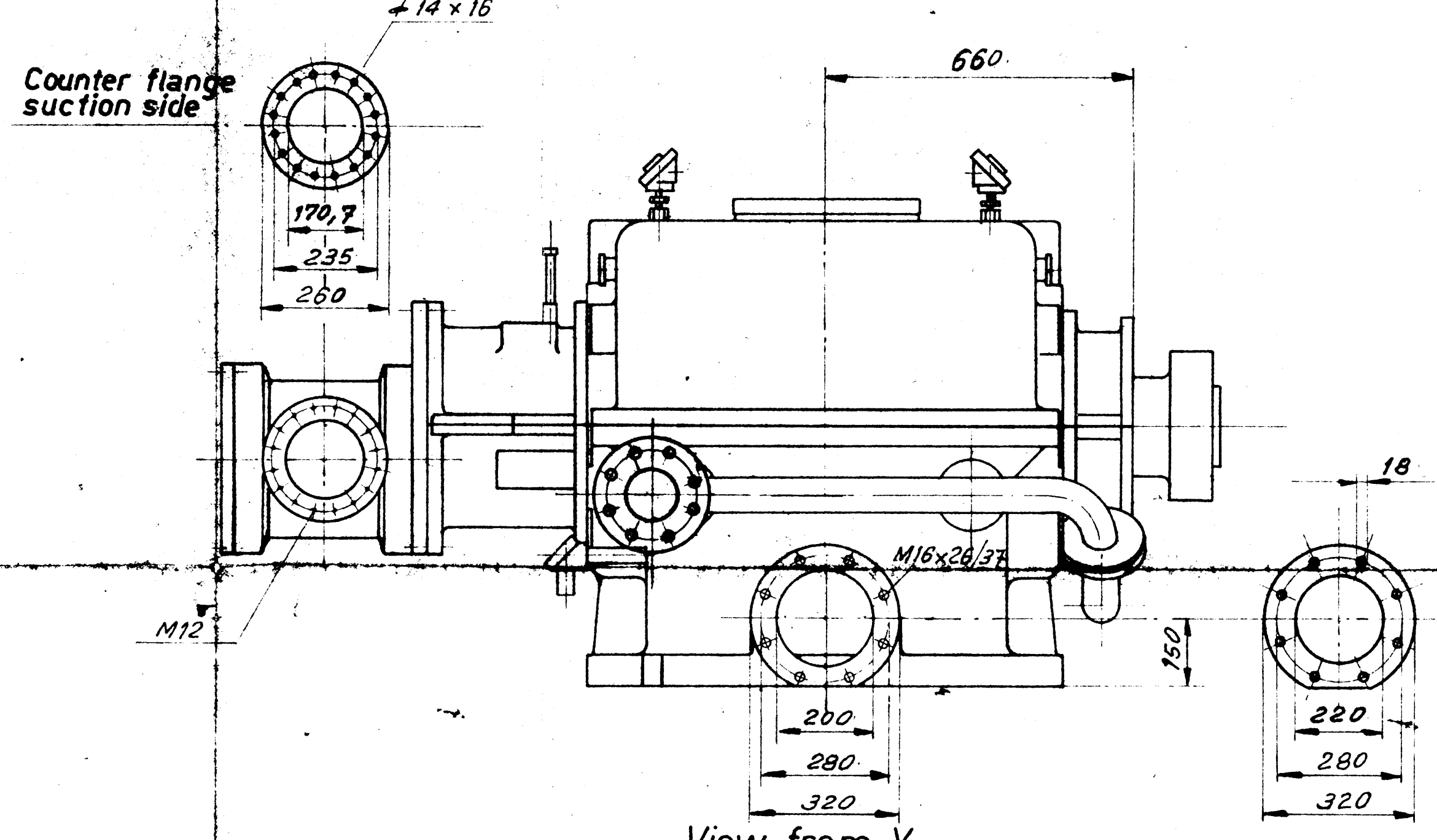
View from compressor side



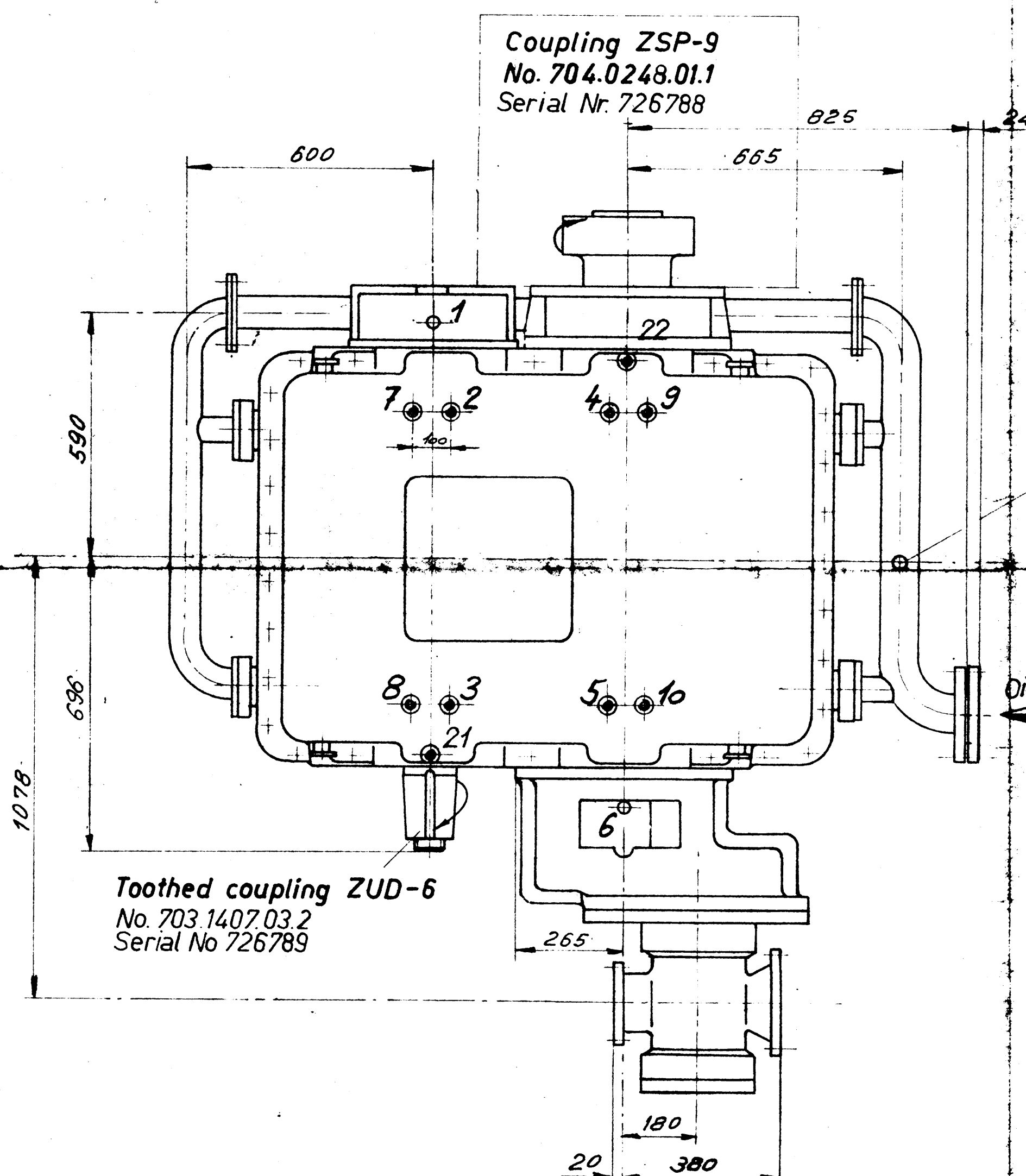
View from X



View from motor side

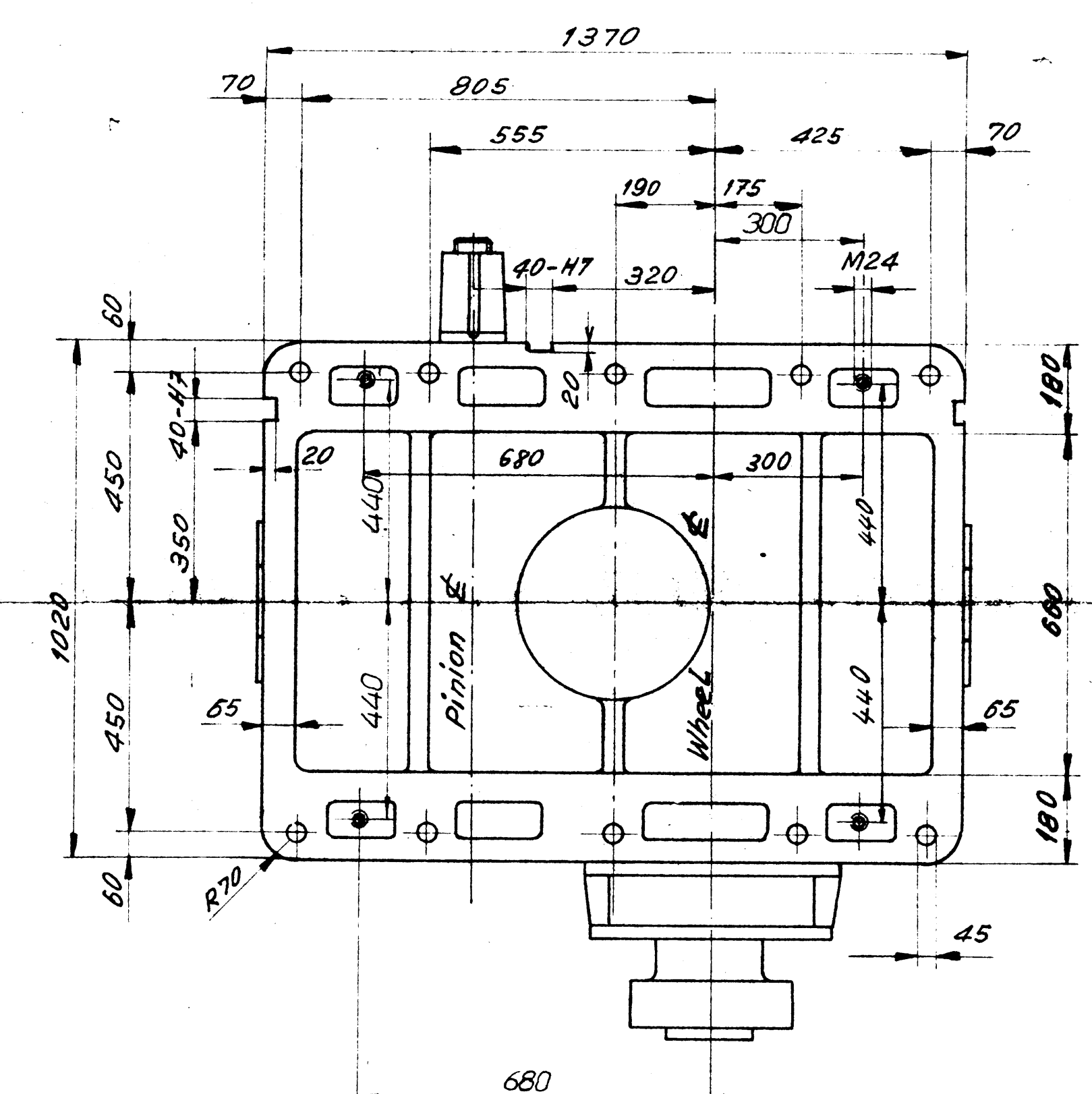


View from Y

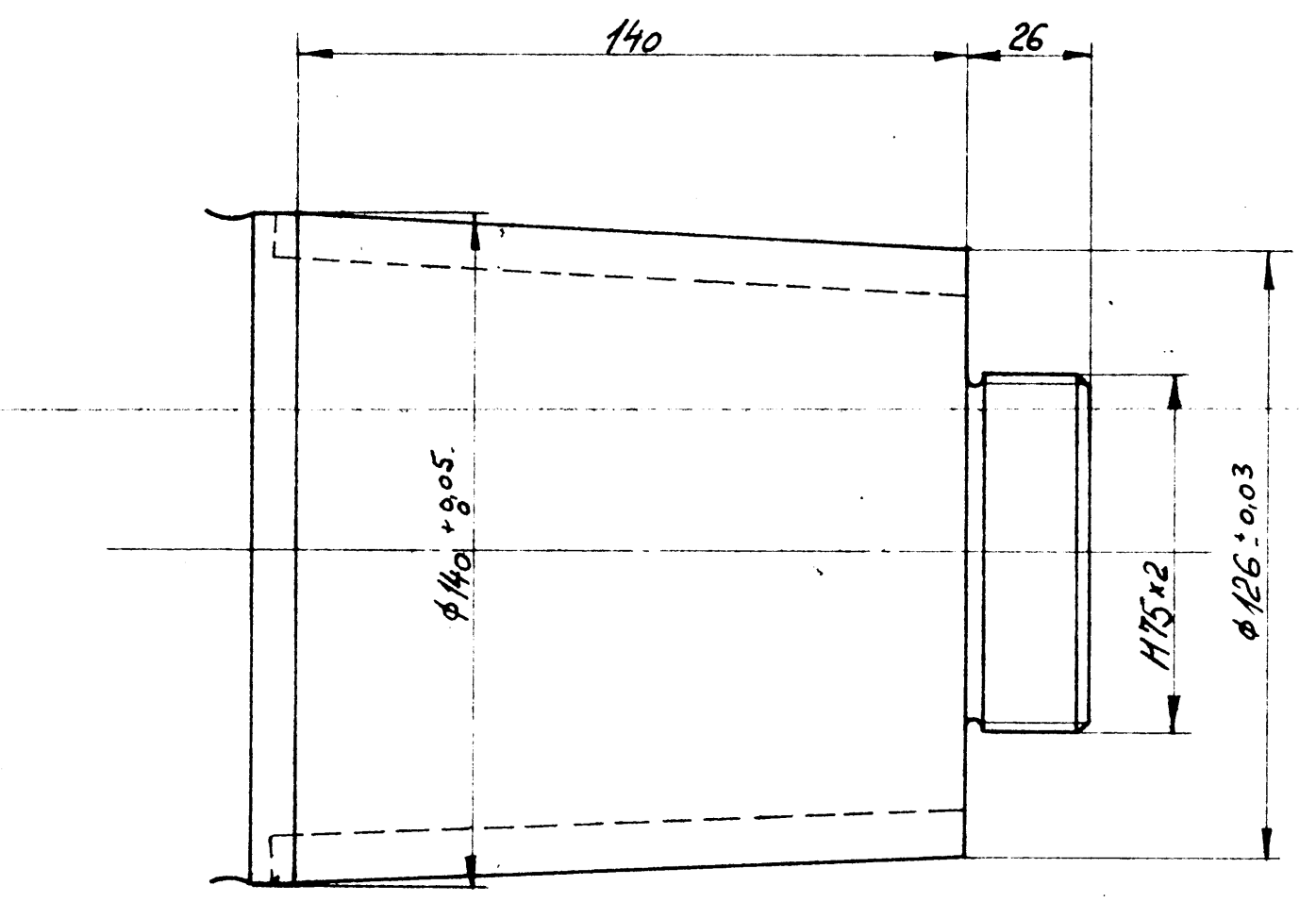


Connection for pressure gauge G 1/2"

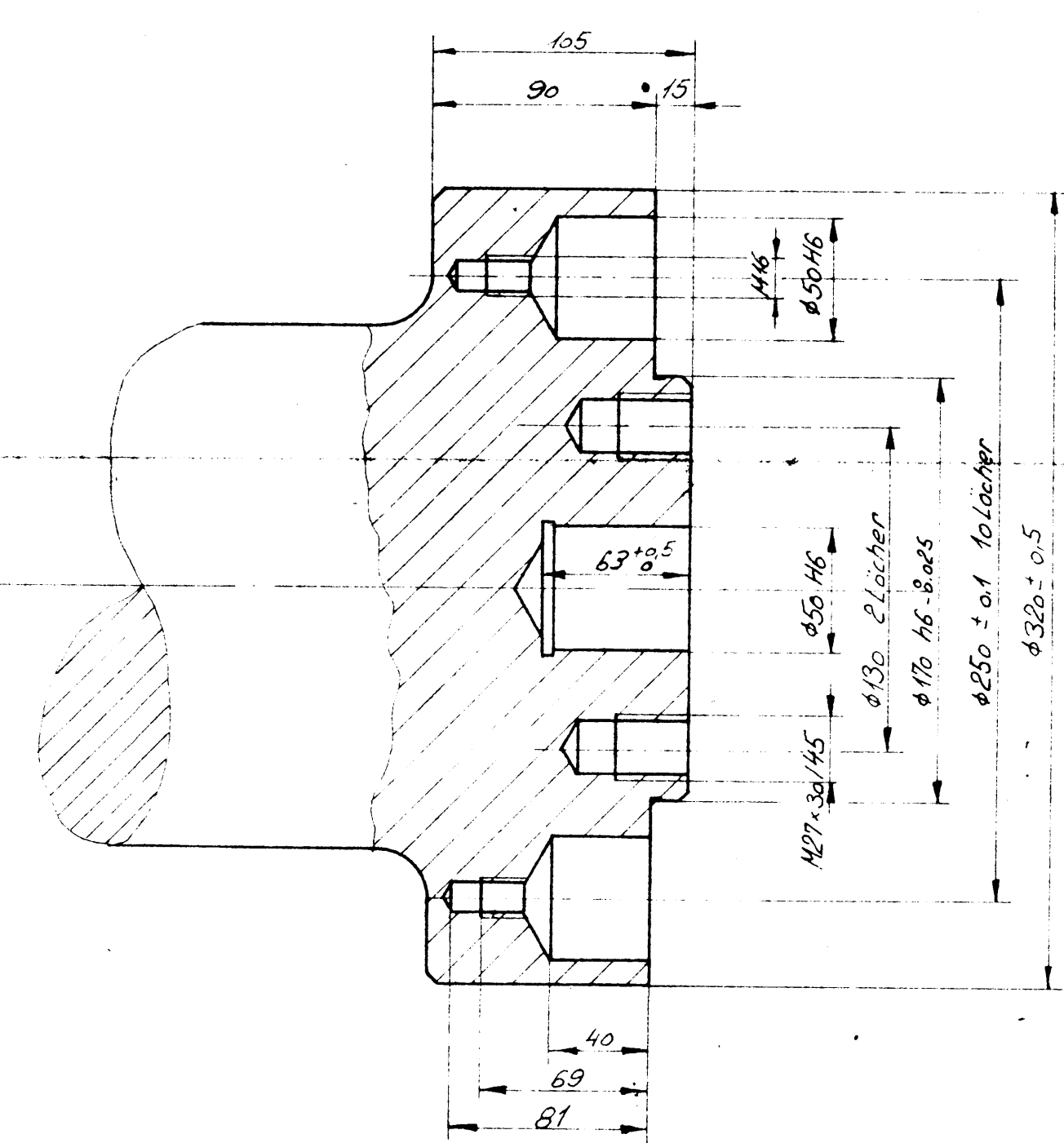
Oil inlet 580 l/min
Oil pressure 1,5 bar
Viscosity 4,5°E / 50° C



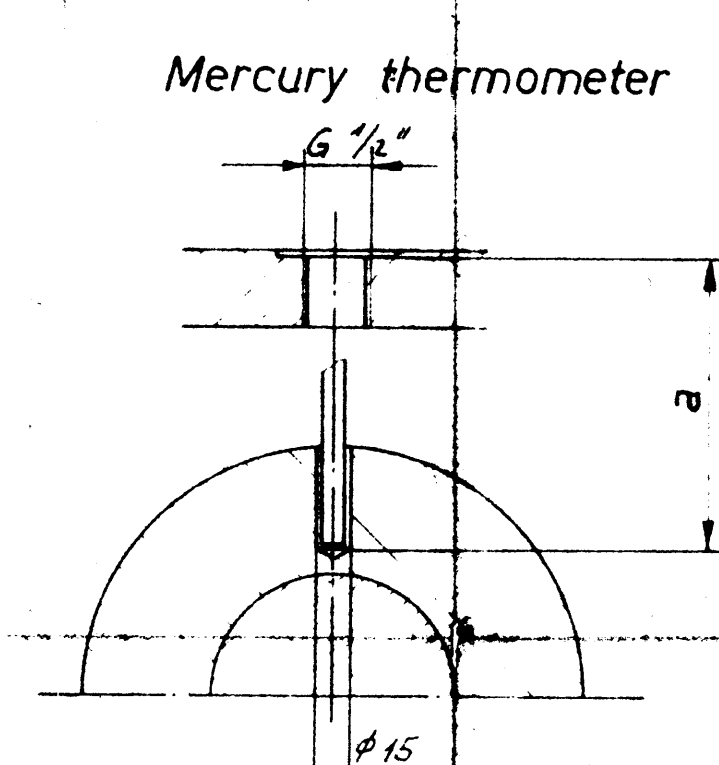
Bottom view of casing
Minco temperatur detector



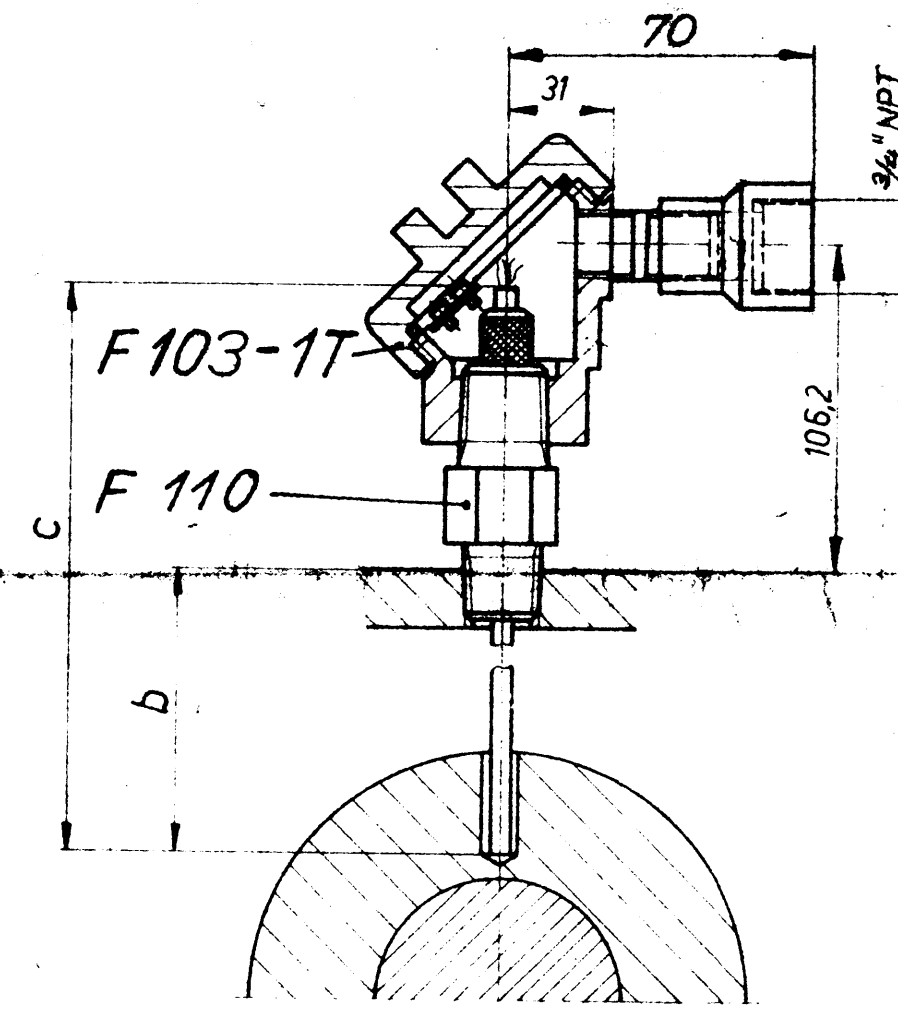
Pinion shaft end
Cone 1:10
Taper gauge from F. Tosi



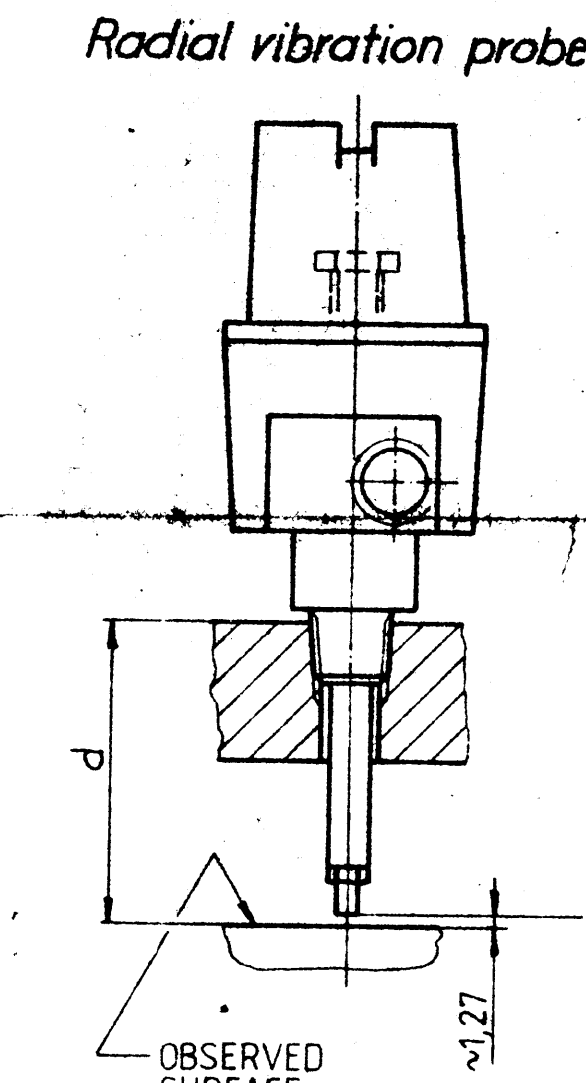
Wheel shaft end



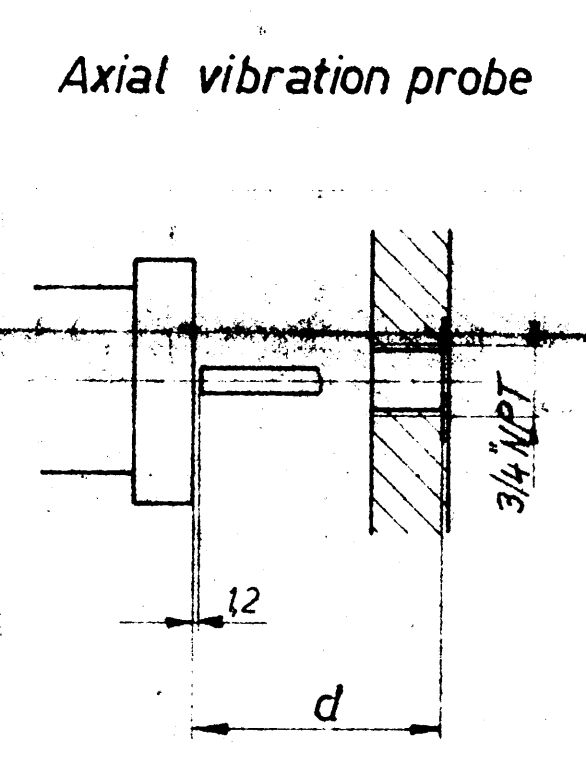
Mercury thermometer



Sealing Assembly for
Embedded Temperature Detectors



Radial vibration probe



Axial vibration probe

SIGLATE	No	Model	a
TI 18	1	Mercury	50
TI 17	2	"	360
TI 16	3	"	360
TI 13	4	"	343
TI 14	5	"	343
TI 15	6	"	30

SIGLATE	No	Model	b	c
TE 15	7	S4046P179Z4	360	455
TE 16	8	S4046P179Z4	360	455
TE 9	9	S4046P172Z4	343	438
TE 10	10	S4046P172Z4	343	438

SIGLATE	No	Model	Length
TE 13	11	Minco S341P3S 100	2540
TE 12	12	Minco S341P3S 100	2540
TE 14	13	Minco S341P3S 100	2540
TE 11	14	Minco S341P3S 100	2540
TE 10	15	Minco S341P3S 100	2540
TE 9	16	Minco S341P3S 100	2540
TE 8	17	Minco S341P3S 100	2540
TE 7	18	Minco S341P3S 100	2540

SIGLATE	No	Model	d
XE 2	21	21000-00-00-143-04362	52
XE 1	22	21000-00-00-131-04332	52

Weights	Kg
Total	5400
Case lower part	1870
Case upper part	860
Pinion	320
Wheel	1335

REVISIONS	DESCRIPTION	DATE
a	Pinion shaft end, Instrumentation	13.3.84
b	Coupling and Pump No added	15.4.84
c	Instrumentation changed	16.12.84
d	added SIGLATE TI, TE, XE	15.1.85

MAAG-ZAHNRÄDER AG	ZURICH
4.2.81 ma	17.2.85
1:10	1:10
MAAG-ZAHNRÄDER AG	ZURICH

Increasing Gear GB-47	P=20000 kW	n=3000 / 17683 RPM
721	1575	01